

SHEEP PLUSHIE

Materials List:

Polyfil stuffing

White and black felt- eyes

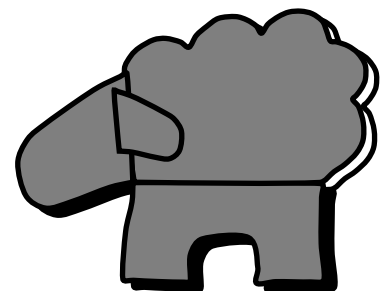
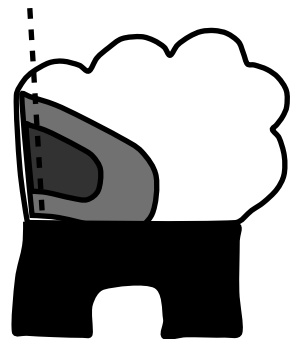
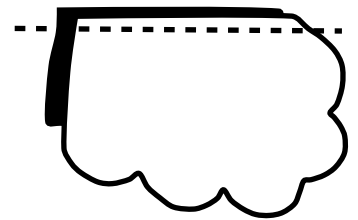
1/8 yard or fat quarter – Black fabric

25" X 25" – fuzzy felt, white



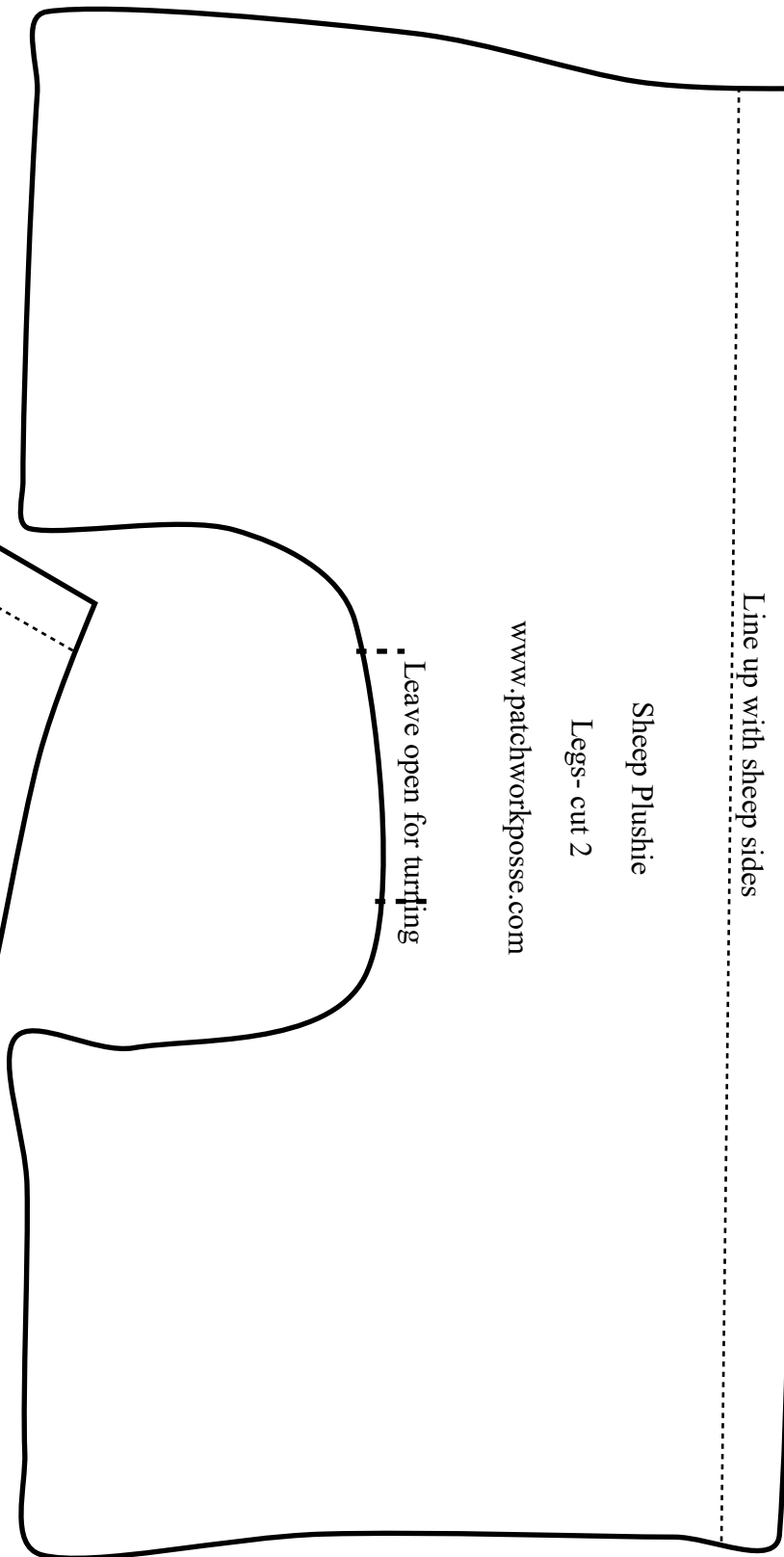
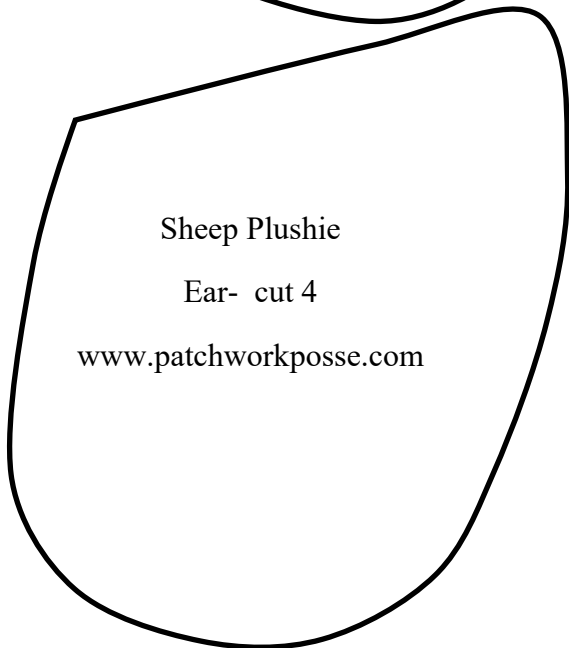
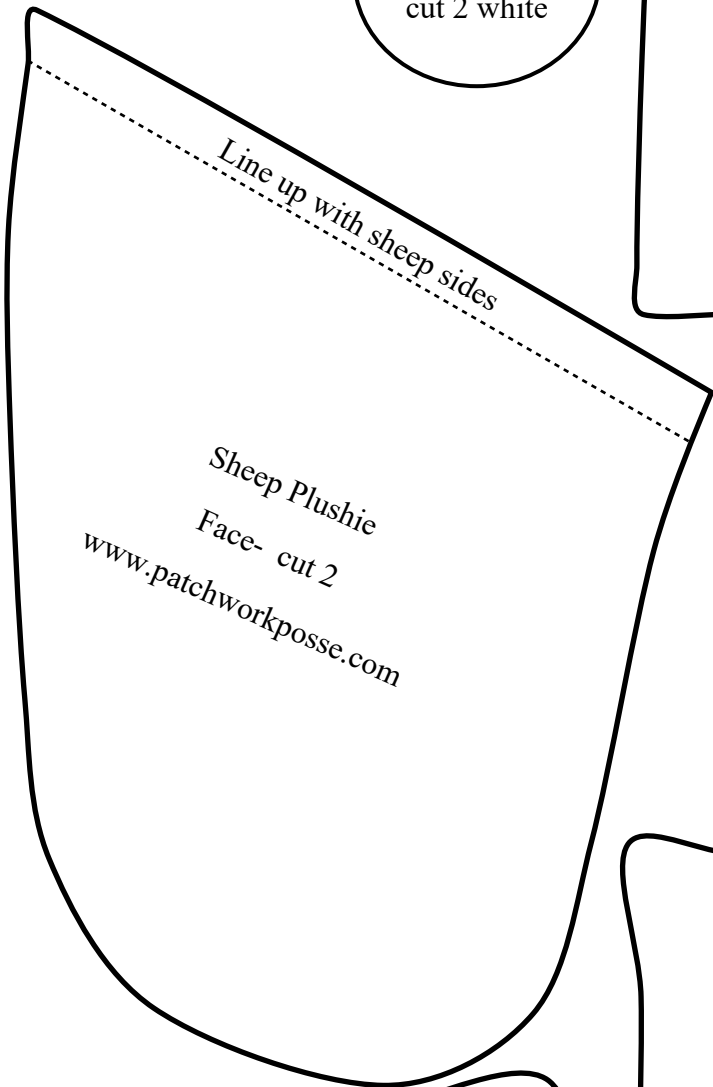
Instructions:

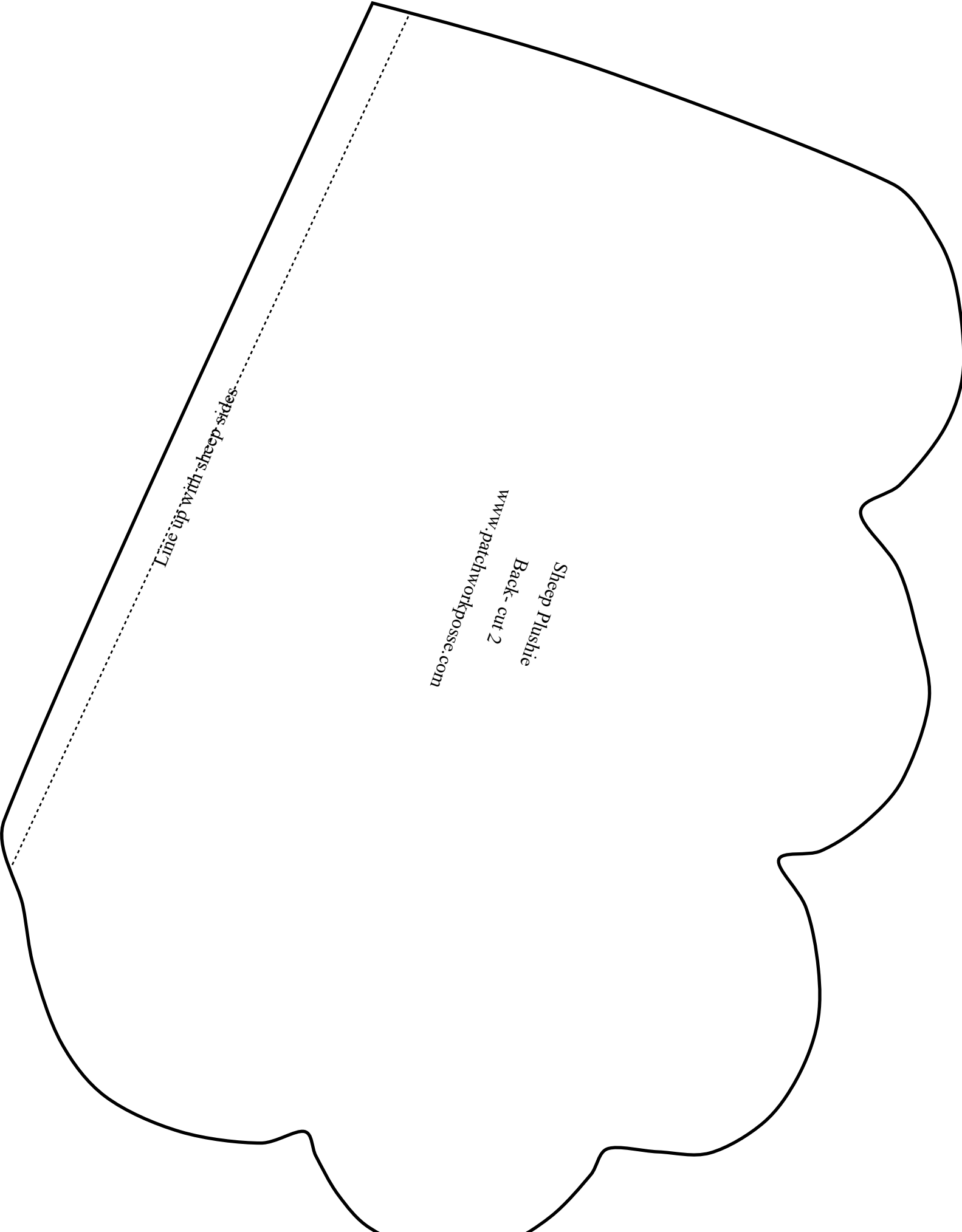
- 1) Cut out template on another piece of paper
- 2) Pin on wrong side of fabric
- 3) Cut out - repeat with other pieces
- 4) Overlap the fuzzy side piece with the legs and sew together- repeat with second pieces
- 5) Lay right sides together two ear pieces, sew together leaving the bottom open
- 6) Turn the ears right sides out and repeat with second ear
- 7) Overlap the fuzzy side piece with the face piece – pin the ear in between before sewing– and sew together- repeat with second pieces
- 8) Lay right sides together one whole sheep to the other and pin well around the outside edge
- 9) Sew all the way around the sheep leaving an opening in between the legs for turning
- 10) Snip well the hills and valleys
- 11) Turn right sides out and stuff firmly
- 12) Pin the eyes in place and hand stitch with either a whip stitch or button hole stitch
- 13) Close the opening with a ladder stitch



Eye-
cut 2 black

Eye-
cut 2 white





Line up with sheep sides

*Sheep Plushie
Back-cut 2
www.patchworkposse.com*